

## Transfer of Search Results to EndNote and Reference Manager

Search results from the different databases available at DIMDI can be easily transferred to literature management programs such as EndNote or Reference Manager. There the literature data can be managed, processed and to a great extent automatically inserted into your own documents via word processing.

Hereafter, are described the transfer of search results with RIS exchange format into EndNote and Reference Manager.

Waisenhausgasse 36-38a  
D-50676 Köln

Tel.: +49 221 4724-1  
Fax +49 221 4724-444  
posteingang@dimdi.de  
www.dimdi.de

Ansprechpartner:  
Helpdesk Technik  
Tel: +49 221 4724-270  
helpdesk@dimdi.de

## Use of the RIS exchange format

In order to easily transfer computer results into the literature management program, the RIS exchange format is offered. The documents are output with specially defined field tags for the RIS format, and a default assignment takes place for the fields in the EndNote and Reference Manager database. Therefore, you cannot yourself influence the filter.

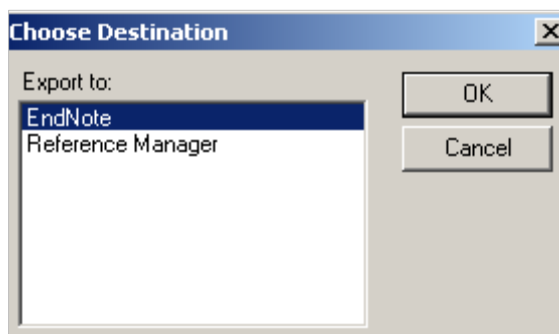
Please note that, on the basis of this default assignment, the bibliographic and content-indexed data fields are particularly taken into account in the RIS format. Unfortunately, special data fields, such as the reference declarations in SciSearch cannot be converted into RIS format.

There are two selection possibilities, providing documents with automatically produced RIS data via email (simple variant) or the creation of RIS data in several steps (complex variant).

Generally, to avoid problems with the implementation of umlauts in advance you should enter the command DEFINE CHARSET=ASCII.

The provision of documents with automatically created RIS data via email is effected by entering the command MAIL with the parameters REPORT=RIS;F=XMLALL (MAIL REPORT=RIS;F=XMLALL). The RIS data can be found in the email attachment that you receive shortly afterwards. Double click on the data and a window opens up where you can select EndNote or rather Reference Manager.

After clicking on OK, EndNote or rather Reference Manager is opened and the database documents are read in.



Im Geschäftsbereich des



Bundesministerium  
für Gesundheit



The creation of RIS data in several steps takes place with the assistance of the command SHOW with the parameters REPORT=RIS;F=XMLALL.

The documents issued with the SHOW command can be stored with the function "store protocol" (Type:TXT=text data) (please delete the protocol file before the SHOW command). Now, open the txt data (file name.txt) and remove the first and last lines so that only the document remains in the data. Finally, rename this data into the file name.ris. Double clicking on file name.ris opens a window where you can select EndNote or rather Reference Manager. After clicking on OK, EndNote or rather Reference Manager is opened and the database documents are read in.

In DIMDI SmartSearch, select the output RIS and the document will be issued online or sent via email. Further steps are described above.

Attention: With RIS format the field PY is always output, so that output of the title list without costs is not possible.